

S4A

Data Analysis Software



GRAPHIC ANALYSIS
Powerful graphic analysis



ONLINE READING
Real time data reading with USB or Ethernet connection



FREE TO USE
No payment or subscription needed



ANALYSIS ON EXPORTED FILES
Export data to the .XLSX and .CSV file



READOUT OF SCREENSHOTS
Read screenshots from SUTO S331



REMOTE CONNECTION
Read out field devices via Internet connections



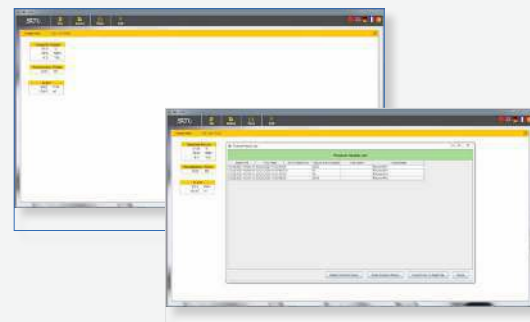
Benefits

- ✓ Free software with quick analysis through powerful graphs and exported tables
- ✓ On-site real time analysis through online data reading
- ✓ Remote access of SUTO displays and Loggers that are equipped with LTE/4G modem
- ✓ Easy installation with installation wizard
- ✓ Multiple languages available

Data Analysis with S4A

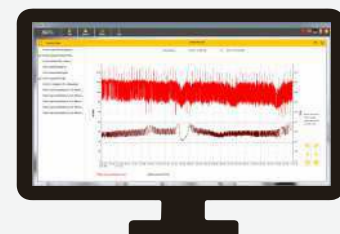
S4A is a stand alone free software used to analyze measurement data recorded by SUTO data loggers. Local stored logger files from any SUTO device with logging function can be opened, analyzed and exported.

- Real-time online readings of a SUTO device via a USB , Ethernet or wireless LTE/4G connection.
- Powerful graphic tools allowing basic and in-depth analyzes of the data and prepare reports.
- Easy is to set up interface for hassle-free use. No complicated setup menus or configurations. Simply connect SUTO data loggers and read logging files with a single click.
- Integrated export function offers data exchange in .xlsx and .csv format.
- Software recordings are downloaded to the PC via USB, LAN or wirelessly using the LTE/4G Modem.
- The wireless connection offers full functionality as if the devices would be connected via USB. This makes it most flexible and versatile.



Remote Office Location

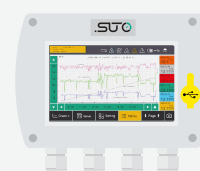
S4A



Local Ethernet
LAN

Data Logging

S331
Data Logger



4G
Modem

Field Devices

Modbus/RTU
Sensors

Analog
Sensors